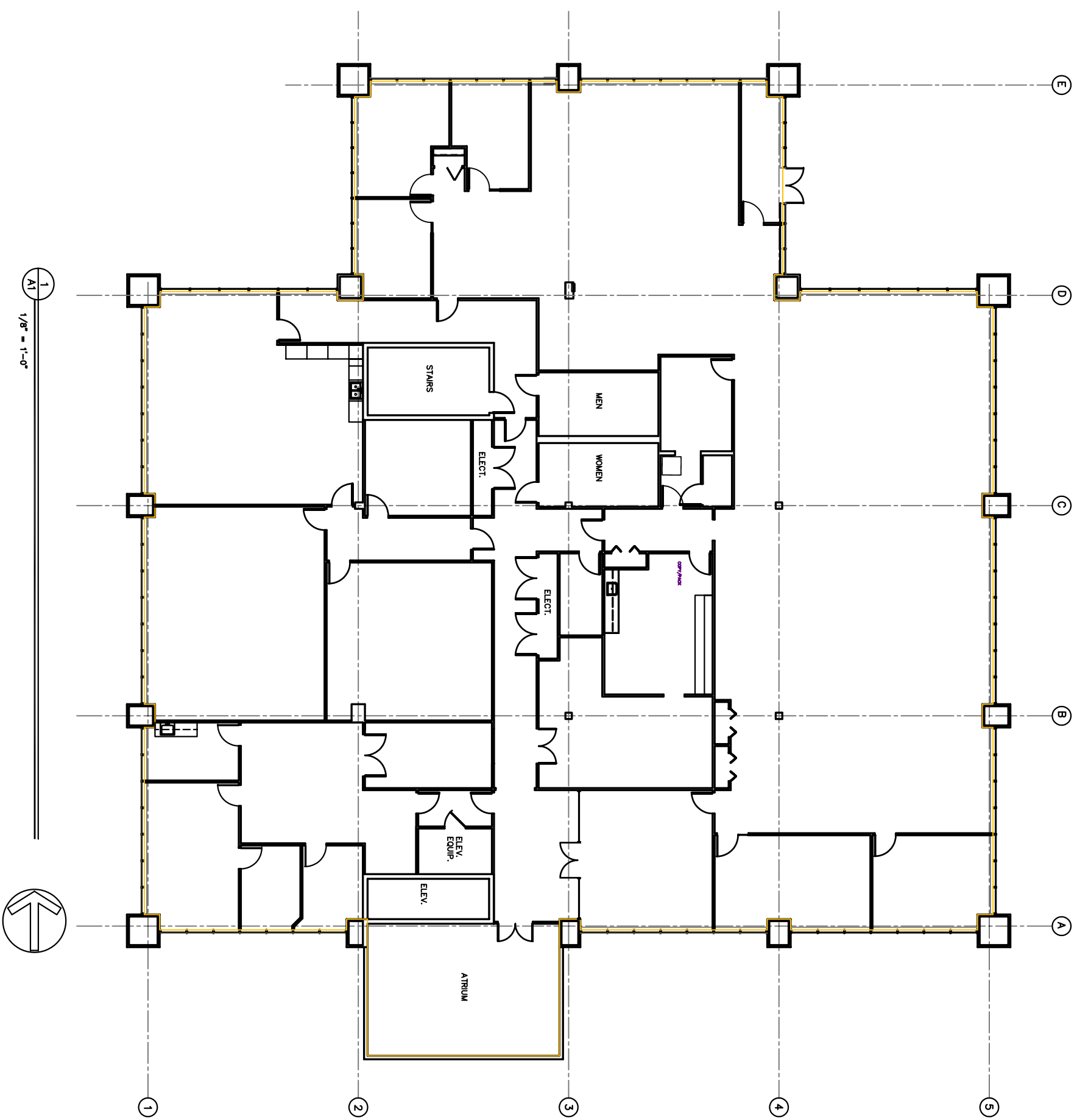
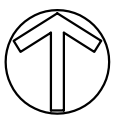
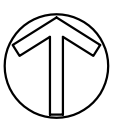


2
A1
BASEMENT PLAN
1/8" = 1'-0"



1
A1
1/8" = 1'-0"



revisions

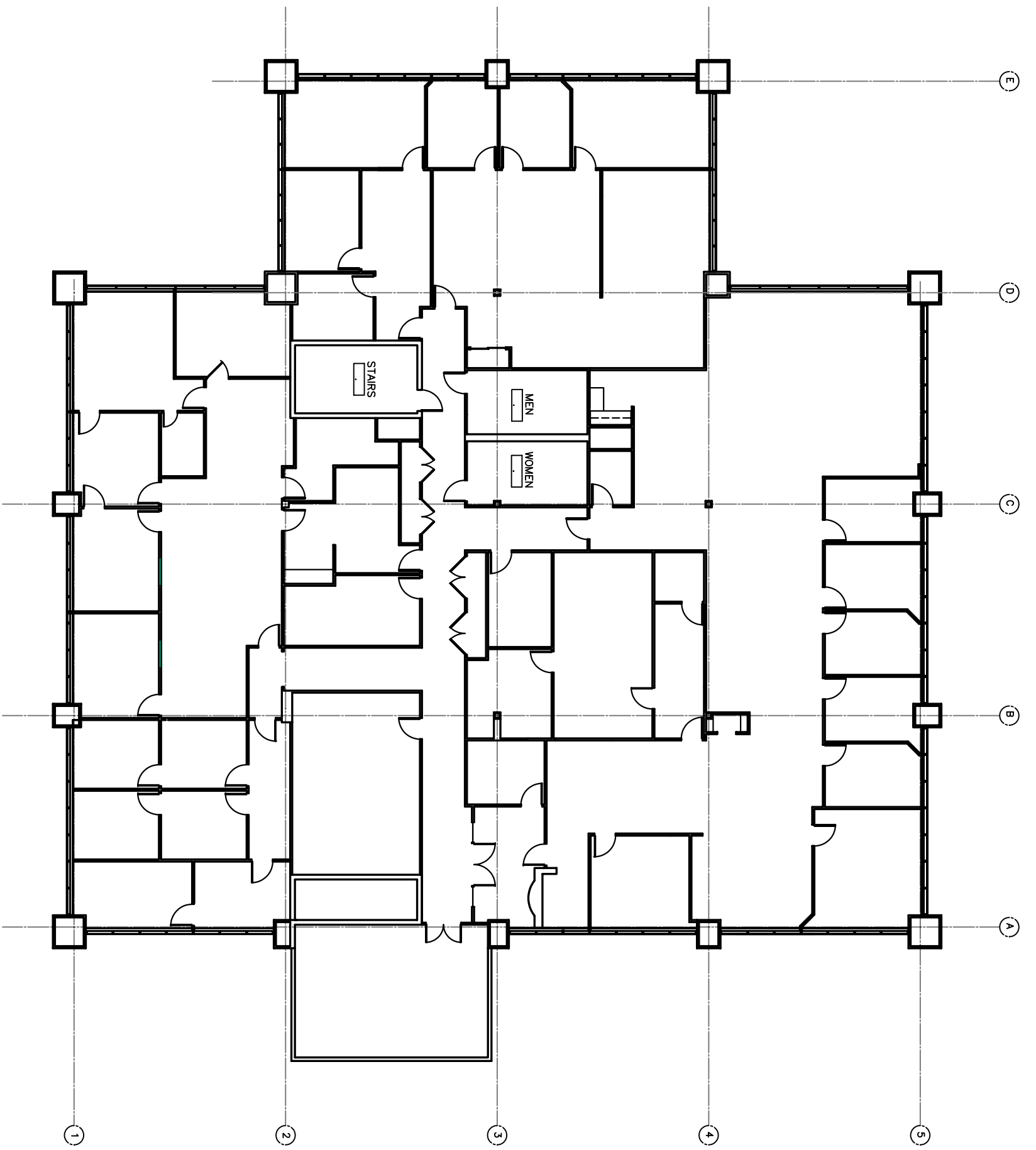
AKRON/
CANTON
CORP.
CENTER II

C/M INC.
BUILDER / DEVELOPER
1525 CORPORATE WOODS PKY.
P.O. BOX 3515
AKRON, OHIO 44309
VOICE: 330-896-3253
FAX: 330-896-3504

contract no.
C-414
date
7-8-98
drawn by

FIRST FLOOR PLAN

A1



SECOND FLOOR PLAN
 1/8" = 1'-0"

revisions

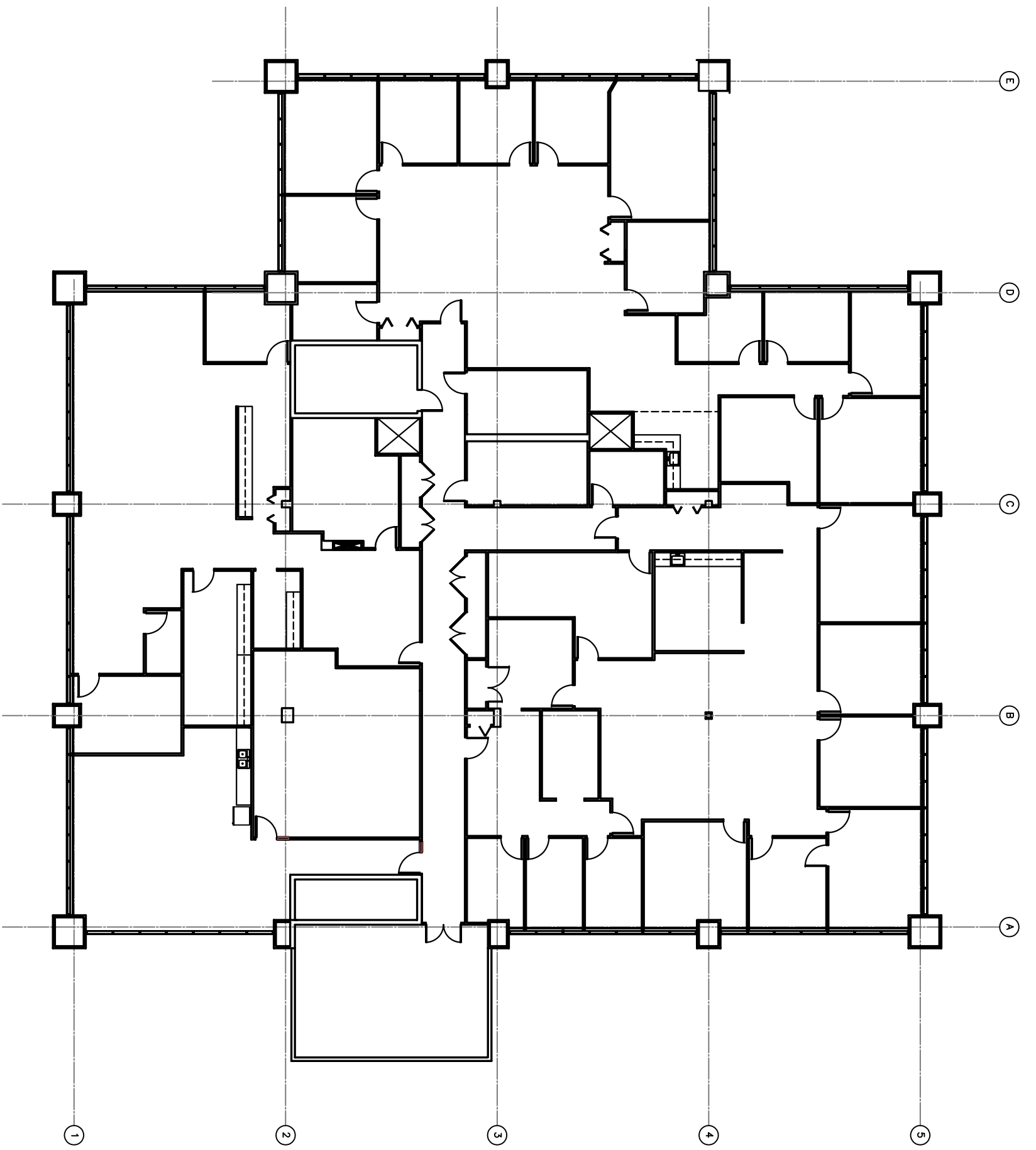
AKRON /
 CANTON
 CORP.
 CENTER II

C/M INC.
 BUILDER / DEVELOPER
 1525 CORPORATE WOODS PKY.
 P.O. BOX 3515
 AKRON, OHIO 44309
 VOICE: 330-896-3253
 FAX: 330-896-3304

contract no.
 C-
 date
 10-16-97
 drawn by

SECOND FLOOR PLAN

A2



THIRD FLOOR PLAN
 1/8" = 1'-0"

revisions

AKRON/
 CANTON
 CORP.
 CENTER II

CSM INC.
 BUILDER / DEVELOPER
 1525 CORPORATE WOODS PKY.
 P.O. BOX 3515
 AKRON, OHIO 44309
 VOICE: 330-896-3233
 FAX: 330-896-3304

contract no.
 C-120
 date
 5/5/07

THIRD FLOOR PLAN

TA3