

LOWER LEVEL FLOOR PLAN

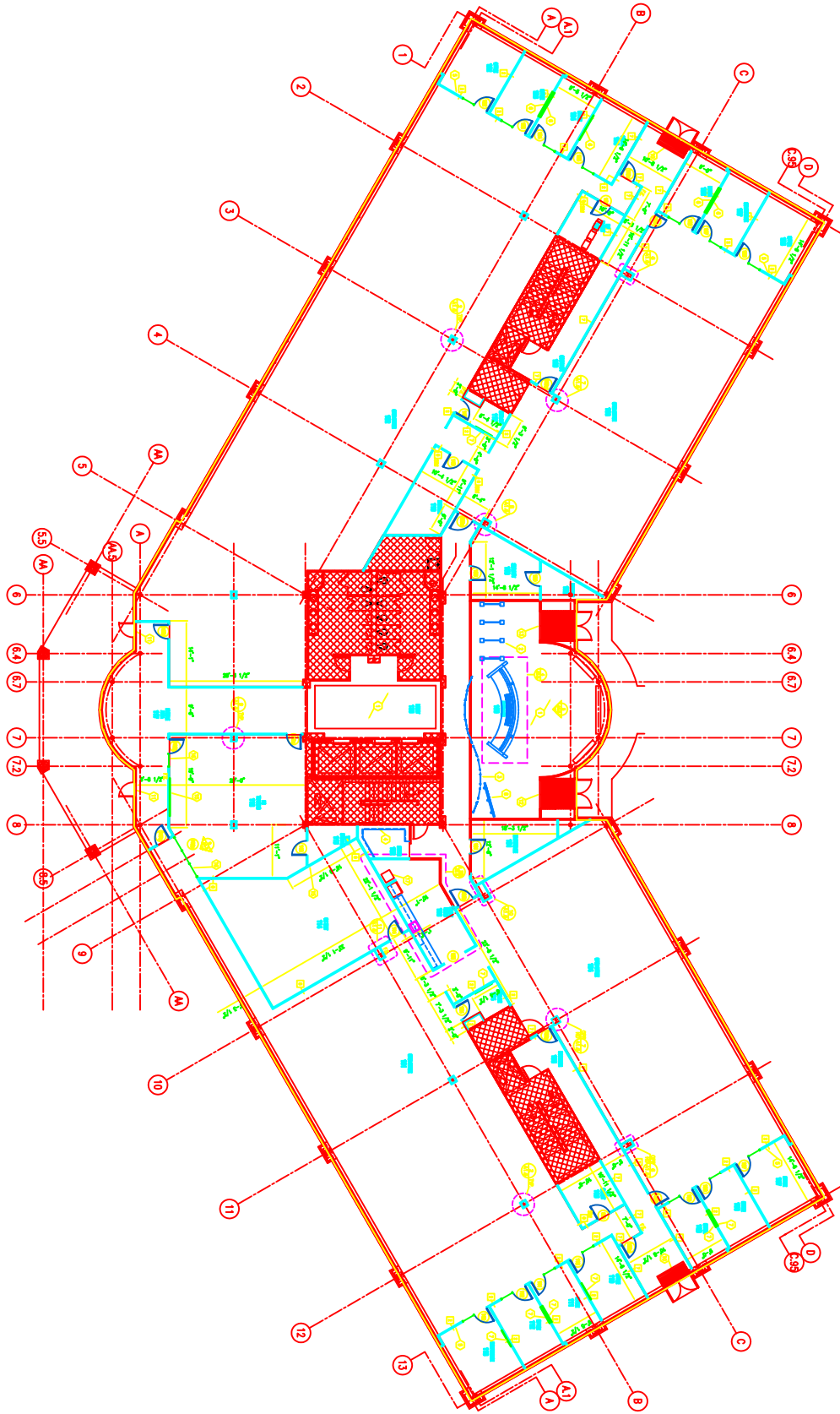
A1

contract no.
 date
 4-8-93
 drawn by

C/M
 INC.
 BUILDER / DEVELOPER
 808 GRANVILLE WOODS PARKWAY
 TOL. OHIO 43085
 PHONE (614) 468-8888
 FAX (614) 468-8881

RICHFIELD CORPORATE EXCHANGE
 KINROSS LAKES RICHFIELD, OHIO

revisions



FIRST FLOOR PLAN

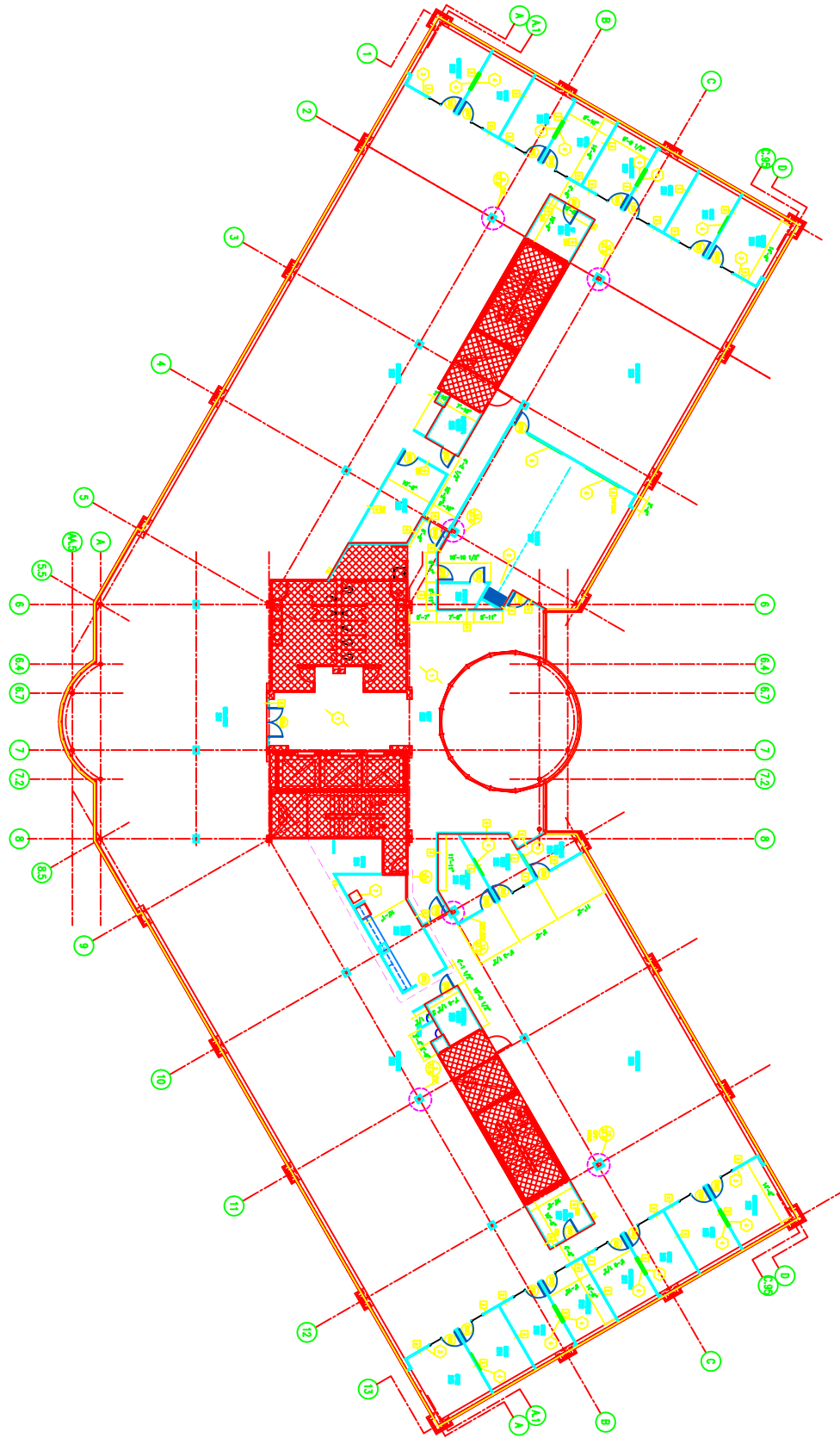
A2

contract no.
 date
 H&S
 drawn by

C/M
 INC.
 BUILDER / DEVELOPER
 808 GRANITE WOOD SHAWNEY
 P.O. BOX 855
 WILLOUGHBY OHIO 44095
 PHONE 216-339-4000
 FAX 216-339-4001
 WWW.CM-INC.COM

RICHFIELD CORPORATE EXCHANGE
 KINROSS LAKES RICHFIELD, OHIO

revisions
 1/24/09 PER STATE CONTRACT
 2/26/09 PER STATE CONTRACT



SECOND FLOOR PLAN

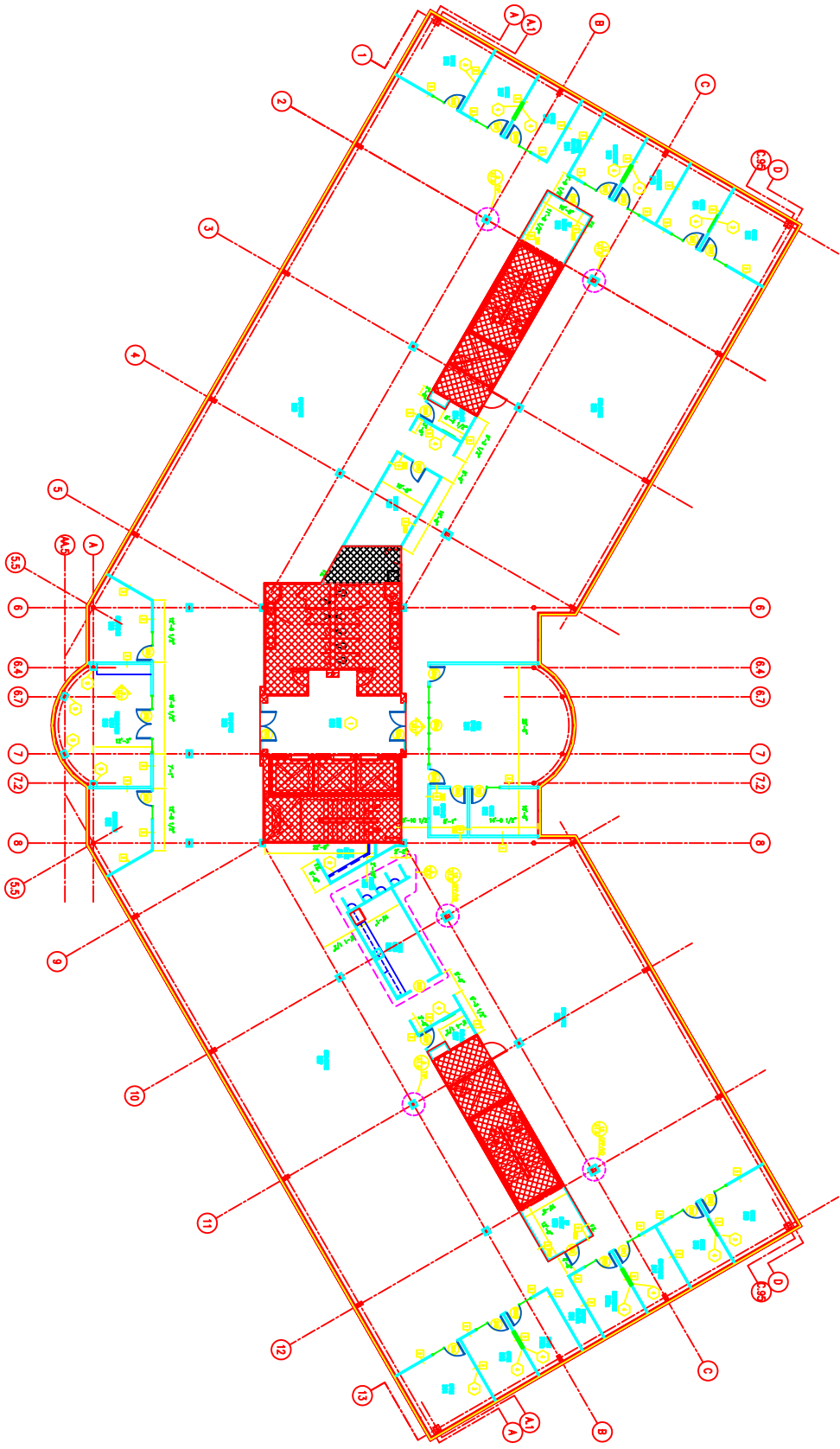
A3

contract no.
 date
 H&S
 drawn by

C&M
 INC.
 BUILDER / DEVELOPER
 805 GRANVILLE WOODS PARKWAY
 TOLSON, OHIO 44130
 PHONE: 440.326.4600
 FAX: 440.326.4601
 WWW.C&M-INC.COM

RICHFIELD CORPORATE EXCHANGE
 KINROSS LAKES RICHFIELD, OHIO

revision
 1. 06/20/09
 2. 04/14/09
 3. 03/11/09



THIRD FLOOR PLAN

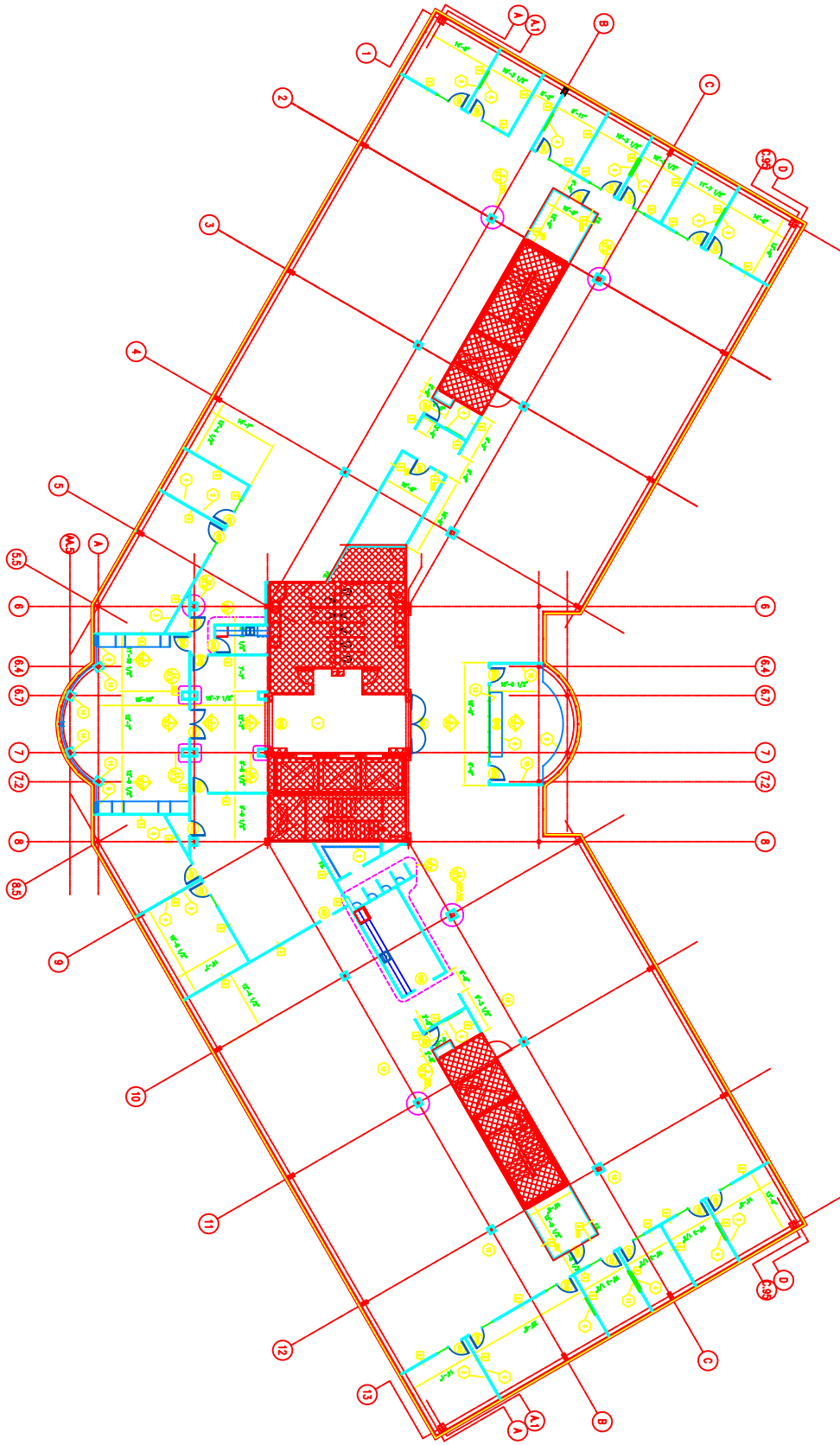
A4

consultant no.
 code
 date
 H448
 drawn by

C&M
INC.
 BUILDER / DEVELOPER
 808 GRANVILLE WOODS PARKWAY
 TOLSON, OHIO 44088
 PHONE: 440.350.4000
 FAX: 440.350.4001

RICHFIELD CORPORATE EXCHANGE
 KINROSS LAKES
 RICHFIELD, OHIO

Revision
 1. 08.10.09 PERMANENT CIVIL REVIEW



FOURTH FLOOR PLAN

A5

continued on
 date
 H48
 drawn by

CJM
 INC.
 BUILDER / DEVELOPER
 808 GRANVILLE WOODS PARKWAY
 TOLSON, OHIO 44088
 PHONE: 216-286-4600
 FAX: 216-286-4601
 WWW: CJM-INC.COM

RICHFIELD CORPORATE EXCHANGE
 KINROSS LAKES RICHFIELD, OHIO

revisions
 1/24/08 FROM ARCHITECT REVIEW