



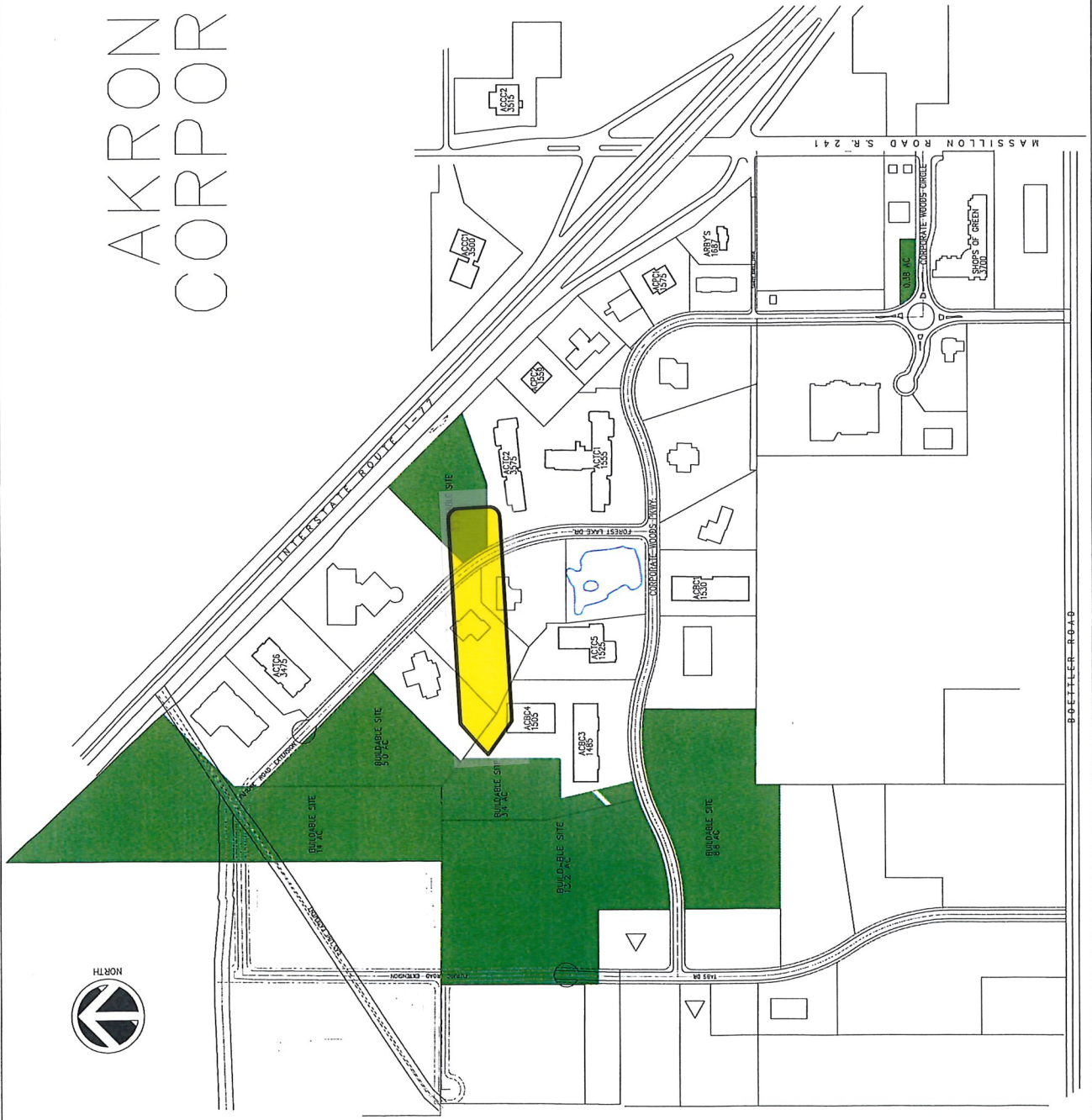
**AKRON/CANTON CORPORATE PARK  
PARCEL # 2810142**

|                            |   |
|----------------------------|---|
| <b>ADDRESS:</b>            | Akron/Canton Corporate Park<br>Corporate Woods Parkway<br>Uniontown, Ohio 44685                             |
| <b>AVAILABILITY:</b>       | AVAILABLE   |
| <b>TYPE:</b>               | Office/Warehouse/Flex   |
| <b>STATUS</b>              | Vacant Land   |
| <b>BUILDING SIZE</b>       | 3.4 Acres   |
| <b>SITE DESCRIPTION</b>    | Beautiful Setting; East Access for Visitor ingress/egress   |
| <b>UTILITIES:</b>          | Water Summit County<br>Sewer Summit County<br>Electric First Energy<br>Gas East Ohio Gas<br>Phone Ameritech |
| <b>FEATURES:</b>           | Easy Access to I-77 and Area Services;<br>Park Setting with Walking Path                                    |
| <b>FIBER OPTICS:</b>       | Available   |
| <b>TENANT IMPROVEMENT:</b> | Building Standard Work Letter   |

For more information contact Traci or Mike  
**(330) 896-3253**



# AKRON CANTON CORPORATE PARK



**CAM** INC.  
BUILDER / DEVELOPER

1525 CORPORATE WOODS PARKWAY  
AKRON, OHIO 44309  
P.O. BOX 3515  
VOICE: 330-896-3253  
FAX: 330-896-3304

SEC. 15

LOT 4  
A & M ASSOCIATES

LOT 3  
A & M ASSOCIATES

160 PARKING SPACES  
3.09 ACRES

PROPOSED  
40,000 S.F.  
1455 CORP.  
WDS. PKWY.

PATIO

EXISTING  
24,000 S.F.

EXISTING  
32,940 S.F.

WOODS PARK

