



## STONEGATE BUSINESS CENTER I

<b>ADDRESS:</b>	Stonegate Corporate Park 4180 Highlander Pkwy Richfield, Ohio 44286
<b>AVAILABILITY:</b>	AVAILABILITY Suite 200: 19,000 square feet (Office)
<b>TYPE:</b>	Office
<b>BUILDING SIZE:</b>	60,000 square feet
<b>FLOORS:</b>	Two (2) Story Building
<b>BAY SIZE:</b>	30' x 30'
<b>CLEAR HEIGHT:</b>	10'
<b>YEAR BUILT:</b>	2005
<b>HVAC SYSTEM:</b>	Rooftop HVAC units
<b>FLOOR LOADING:</b>	80 to 100 lbs. live load
<b>PARKING SPACES:</b>	6 spaces/1,000 Office
<b>UTILITIES:</b>	Water Summit County Sewer Summit County Electric First Energy Gas East Ohio Gas Phone Ameritech
<b>FEATURES:</b>	Easy Access to I-77/I-271/Ohio Turnpike; Ideal for Call Center User; Ample Parking; Park Setting; Picnic Tables
<b>FIBER OPTICS:</b>	In Building
<b>TENANT IMPROVEMENT:</b>	Building Standard Work Letter

For more information contact Traci or Mike  
**(330) 896-3253**



revisions  
5/12/13

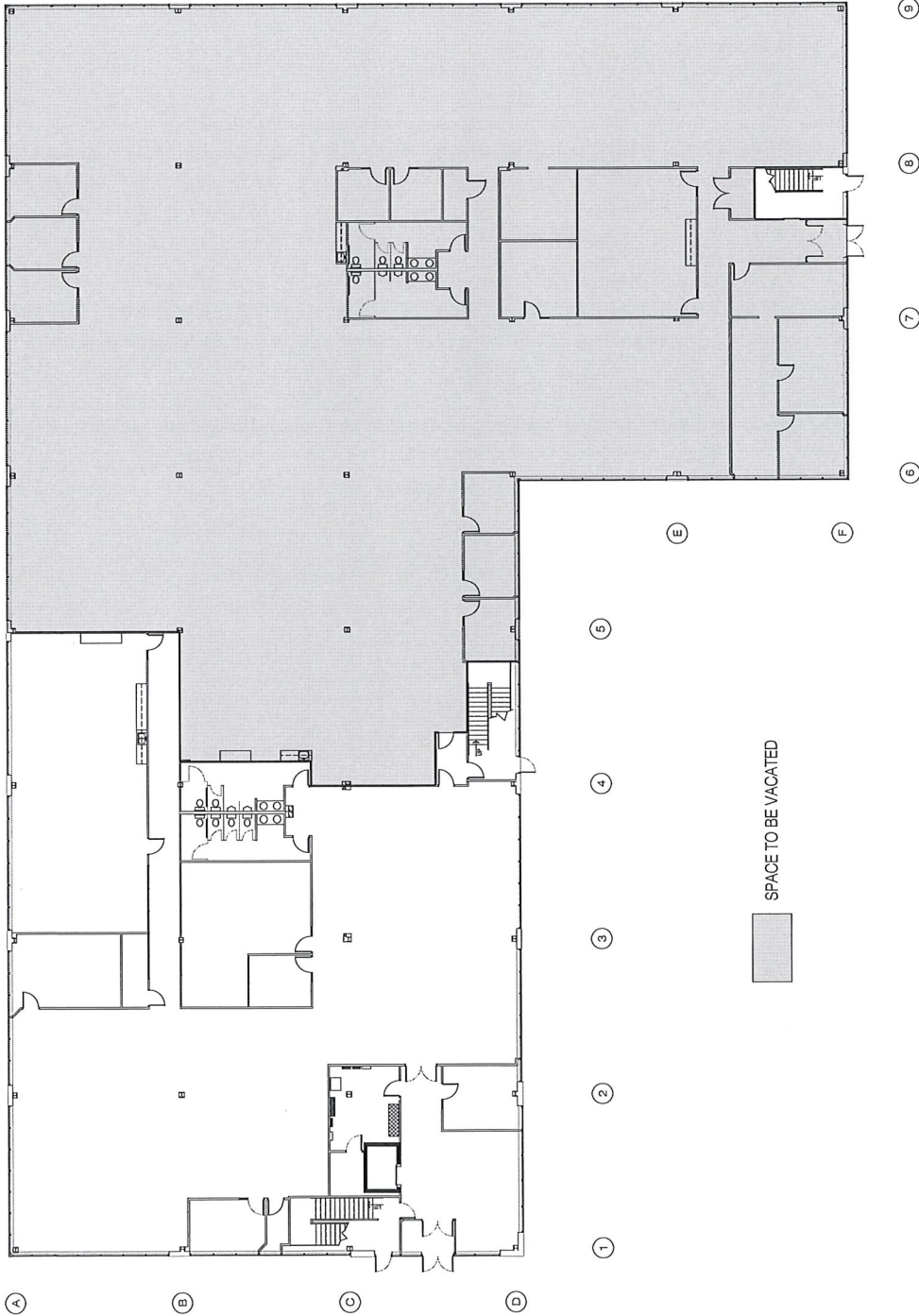
STONEGATE BUSINESS CENTER 1 ADDITION  
4180 HIGHLANDER PARKWAY  
RICHLAND, OHIO

**CSM**  
BUILDER / DEVELOPER  
1525 CORPORATE WOODS PKY.  
P.O. BOX 3515  
AKRON, OHIO 44309  
330-586-3253  
FAX: 330-586-3304

CONTRACT #  
68-48  
DATE  
12/3/13  
SCALE  
3/8"

FIRST FLOOR PLAN

A01



FIRST FLOOR  
12/23/13