



**STONEGATE CORPORATE PARK
PARCEL # 5002720**

ADDRESS:	Stonegate Corporate Park Highlander Pkwy Richfield, Ohio 44286
AVAILABILITY:	AVAILABLE
TYPE:	Office/Warehouse/Flex
STATUS	Vacant Land
BUILDING SIZE:	11.3 Acres
SITE DESCRIPTION	Easy Access for visitor ingress/egress
UTILITIES:	Water Summit County Sewer Summit County Electric First Energy Gas East Ohio Gas Phone Ameritech
FEATURES:	Easy Access to I-77/I-271/Ohio Turnpike; Park setting
FIBER OPTICS:	Available
TENANT IMPROVEMENT:	Building Standard Work Letter

For more information contact Traci or Mike
(330) 896-3253



CAM INC.
 BUILDER / DEVELOPER / REAL ESTATE BROKER
 1525 CORPORATE WOODS PKY
 UNIONTOWN, OHIO 44685
 330-498-3333
 WWW.CAMINCORP.COM

REVISIONS

**STONEGATE
 CORPORATE
 PARK**

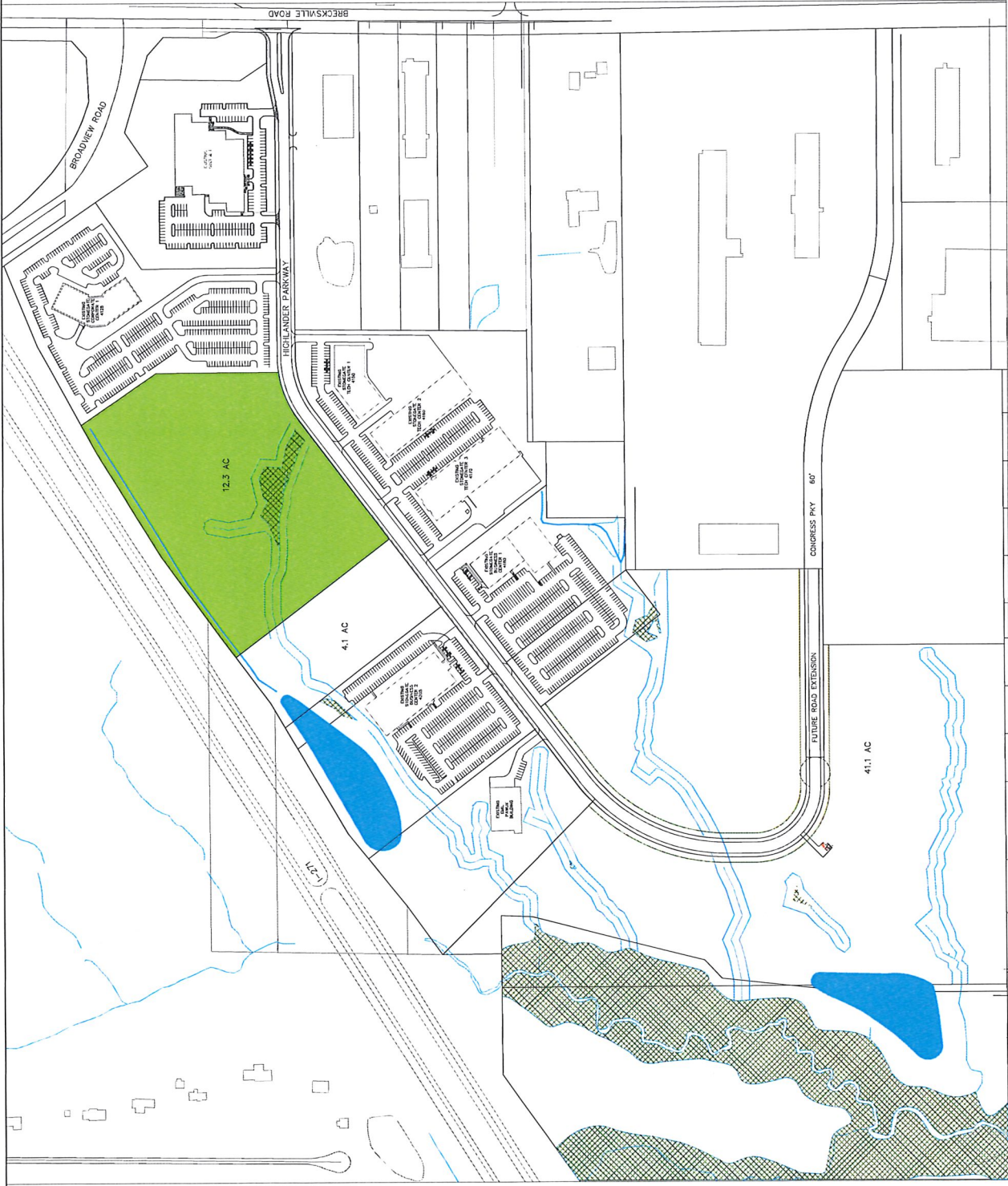
HIGHLANDER PARKWAY
 RICHFIELD, OH 44286



**OVERALL SITE PLAN
 AVAILABLE SITES**
 Project Number: XX-XXXX
 Date: 3/3/2021

SD1

Scale: 1" = 150'-0"



1 OVERALL SITE PLAN
 1" = 150'