

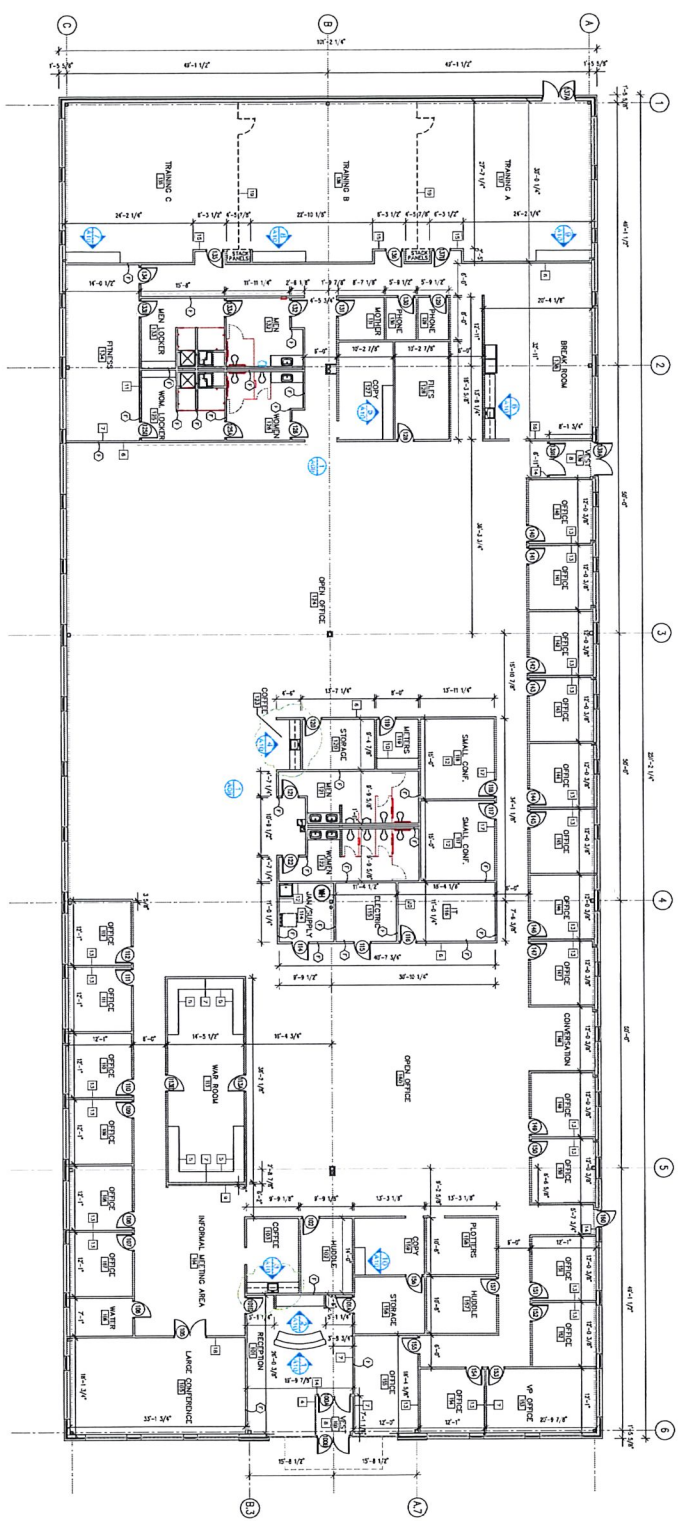


## WILLIAMS BUILDING

<b>ADDRESS:</b>	8701 Port Jackson Avenue NW North Canton, OH 44720
<b>AVAILABILITY:</b>	AVAILABLE
<b>TYPE:</b>	Office
<b>BUILDING SIZE:</b>	25,000 square feet (Currently Vacant)
<b>FLOORS:</b>	Single Story Building
<b>BAY SIZE:</b>	30' x 30'
<b>CLEAR HEIGHT:</b>	8'6"
<b>YEAR BUILT:</b>	2018
<b>HVAC SYSTEM:</b>	Variable Air Volume (VAV) Rooftop HVAC units
<b>FLOOR LOADING:</b>	80 to 100 lbs. live load
<b>PARKING SPACES:</b>	113 (96 regular/4 HC/13 Land Bank)
<b>UTILITIES:</b>	Water Stark County Sewer Stark County Electric AEP Ohio Gas East Ohio Gas Phone Ameritech
<b>FEATURES:</b>	Easy Access to I-77; Akron Canton Airport; 21 Private Offices; Training Room; Fitness Area; Break Room; Large Conference room
<b>FIBER OPTICS:</b>	In Building
<b>TENANT IMPROVEMENT:</b>	Building Standard Work Letter

For more information **contact Traci or Mike**  
**(330) 896-3253**





FLOOR PLAN

3/32" = 1'-0"

- NOTE:
- 1) -ALL DIMENSIONS MATCH TO ROOM FINISH (TYPICAL)
- 2) -ALL WALL FINISHES TO BE 5/8" GYP. OVER GYP. BOARD
- 3) -ALL CEILING FINISHES TO BE 5/8" GYP. OVER GYP. BOARD
- 4) -SUSPENDED & GLASS W/IN. SKEWAL. HANGER FIN. 8'-0" TO SKID
- 5) -CONCRETE TOP FINISHES AT 2" AFF. UNLESS SHOWN OTHERWISE. FINISHES EXPOSING IN WALL
- 6) -WOODWORK FINISHES AT 8" AFF. UNLESS SHOWN OTHERWISE
- 7) -WOODWORK FINISHES TO DISTANCE 1/2"
- 8) -SKEWAL FINISHES TO DISTANCE 1/2"
- 9) -SKEWAL FINISHES TO DISTANCE 1/2"
- 10) -SKEWAL FINISHES TO DISTANCE 1/2"
- 11) -SKEWAL FINISHES TO DISTANCE 1/2"
- 12) -SKEWAL FINISHES TO DISTANCE 1/2"
- 13) -SKEWAL FINISHES TO DISTANCE 1/2"
- 14) -"C" CHANNEL FINISHES TO DISTANCE 1/2"
- 15) -SKEWAL FINISHES TO DISTANCE 1/2"
- 16) -SKEWAL FINISHES TO DISTANCE 1/2"
- 17) -SKEWAL FINISHES TO DISTANCE 1/2"
- 18) -SKEWAL FINISHES TO DISTANCE 1/2"
- 19) -SKEWAL FINISHES TO DISTANCE 1/2"
- 20) -SKEWAL FINISHES TO DISTANCE 1/2"

<p>FLOOR PLAN</p>	<p><b>COMINC.</b> BUILDER / DEVELOPER 1000 GERRARD ROAD PARKWAY MAYFIELD, OHIO 44130 PHONE: 330.999.2233 WWW.COMINC.COM</p>	<p>WILLIAMS 8701 PORT JACKSON AVE, NW NORTH CANTON, OHIO 44720</p>	<p>REVISIONS 7/2/18</p>
<p>A01</p>	<p>CONTRACT # DATE 10/01/18</p>		