

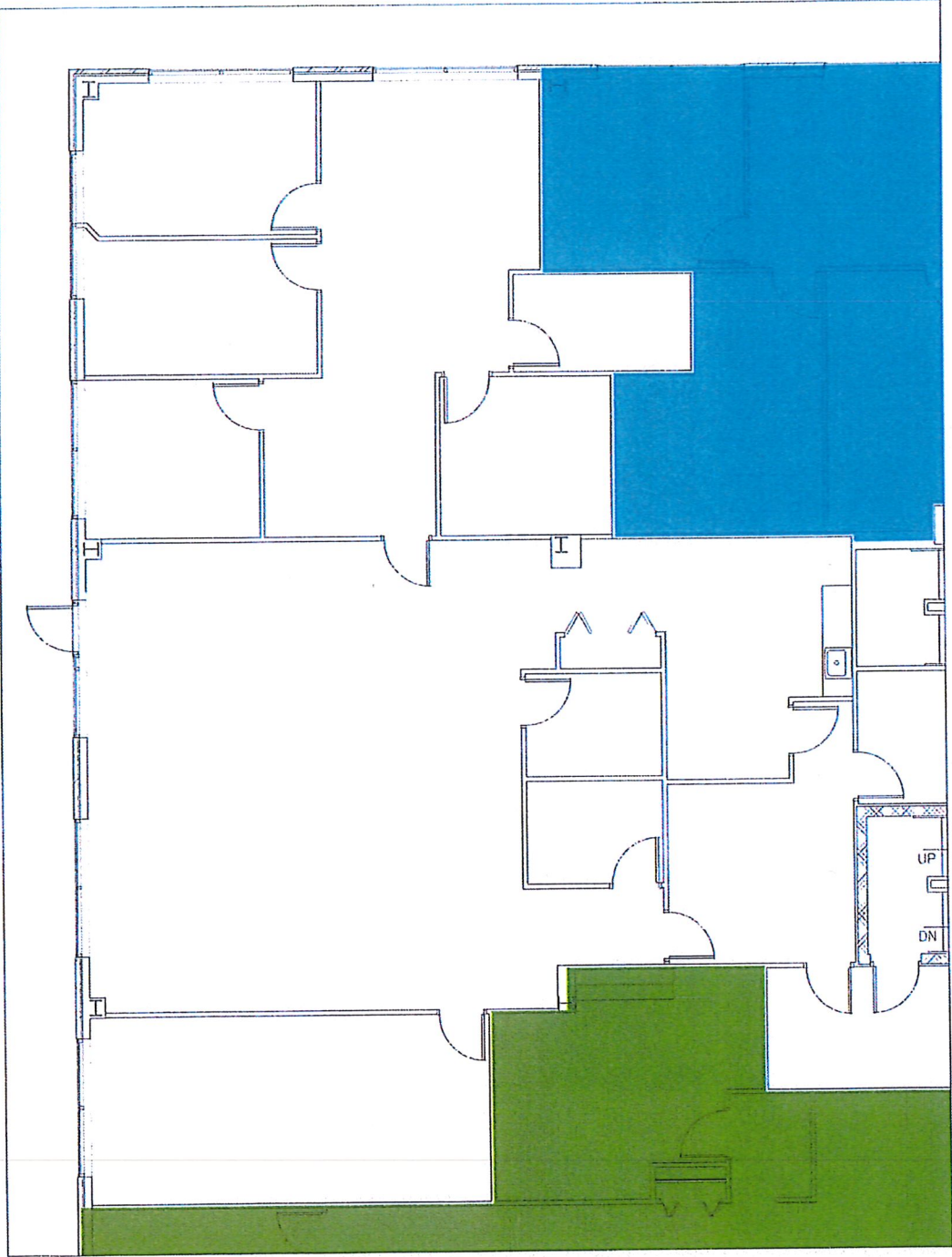


RICHFIELD CORPORATE EXCHANGE

ADDRESS:	Kinross Lakes Corporate Park 4199 Kinross Lakes Parkway Richfield, Ohio 44286
AVAILABILITY:	AVAILABILITY Suite 150: 3,438 square feet Suite 200: 2,731 square feet Suite 235: 2,584 square feet Suite 250: 2,470 square feet
TYPE:	Office
BUILDING SIZE:	50,000 square feet
FLOORS:	Four (4) Story Building
BAY SIZE:	30' x 30'
CLEAR HEIGHT:	9'
YEAR BUILT:	1997
HVAC SYSTEM:	Rooftop HVAC units with Hot Water Perimeter Heat
FLOOR LOADING:	80 to 100 lbs. live load
PARKING SPACES:	4 spaces/1,000 Office
UTILITIES:	Water Summit County Sewer Summit County Electric First Energy Gas East Ohio Gas Phone Ameritech
FEATURES:	Easy Access to I-77/I-271/Ohio Turnpike Common Conference Room and Break Room Outdoor Patio with Picnic Tables
FIBER OPTICS:	In Building
TENANT IMPROVEMENT:	Building Standard Work Letter

For more information contact Traci or Mike
(330) 896-3253





AVAILABLE SUITE

SK01

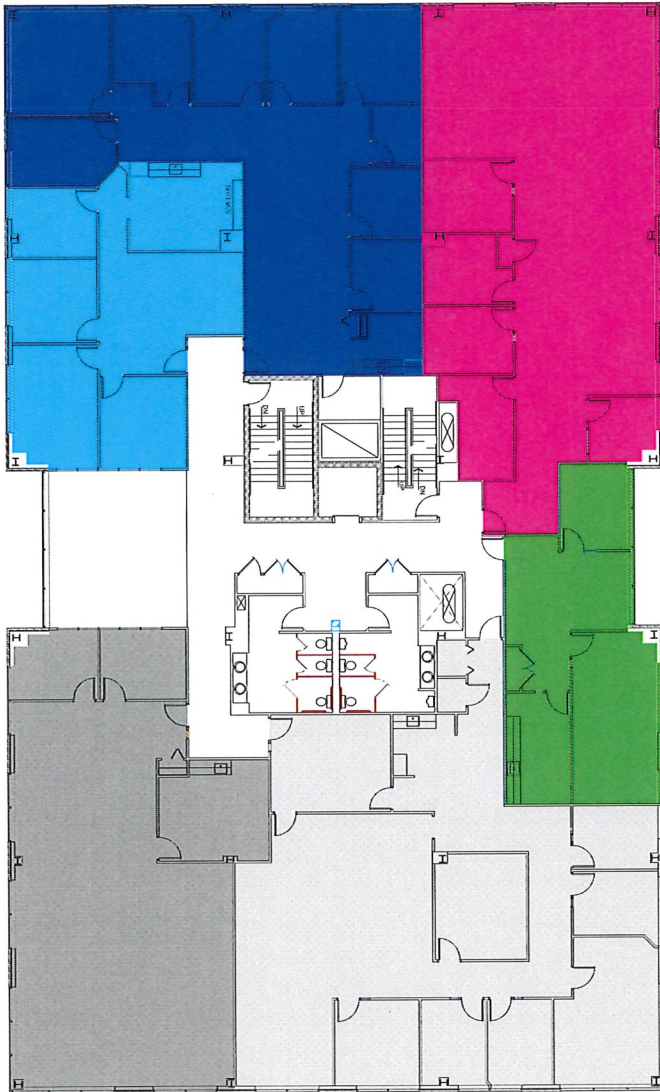
PROJECT:
XX

DATE:
4/27/20

SCALE:
3/32" = 1'

CAM INC.
BUILDER / DEVELOPER
1525 CORPORATE WOODS PKY
P.O. BOX 3515
AKRON, OHIO 44309
VOICE: 330-896-3253
FAX: 330-896-3304

RICHFIELD CORPORATE CENTER 1
4199 KINROSS LAKES PARKWAY
SUITE 150
RICHFIELD, OH 44286



SUITE 200
VACANT

SUITE 210
VACANT

SUITE 220
VACANT

SUITE 235
VACANT

SUITE 250
VACANT

SUITE 275
VACANT

REVISIONS:

RICHFIELD CORPORATE CENTER 1
4199 KINROSS LAKES PARKWAY
RICHFIELD, OH 44286

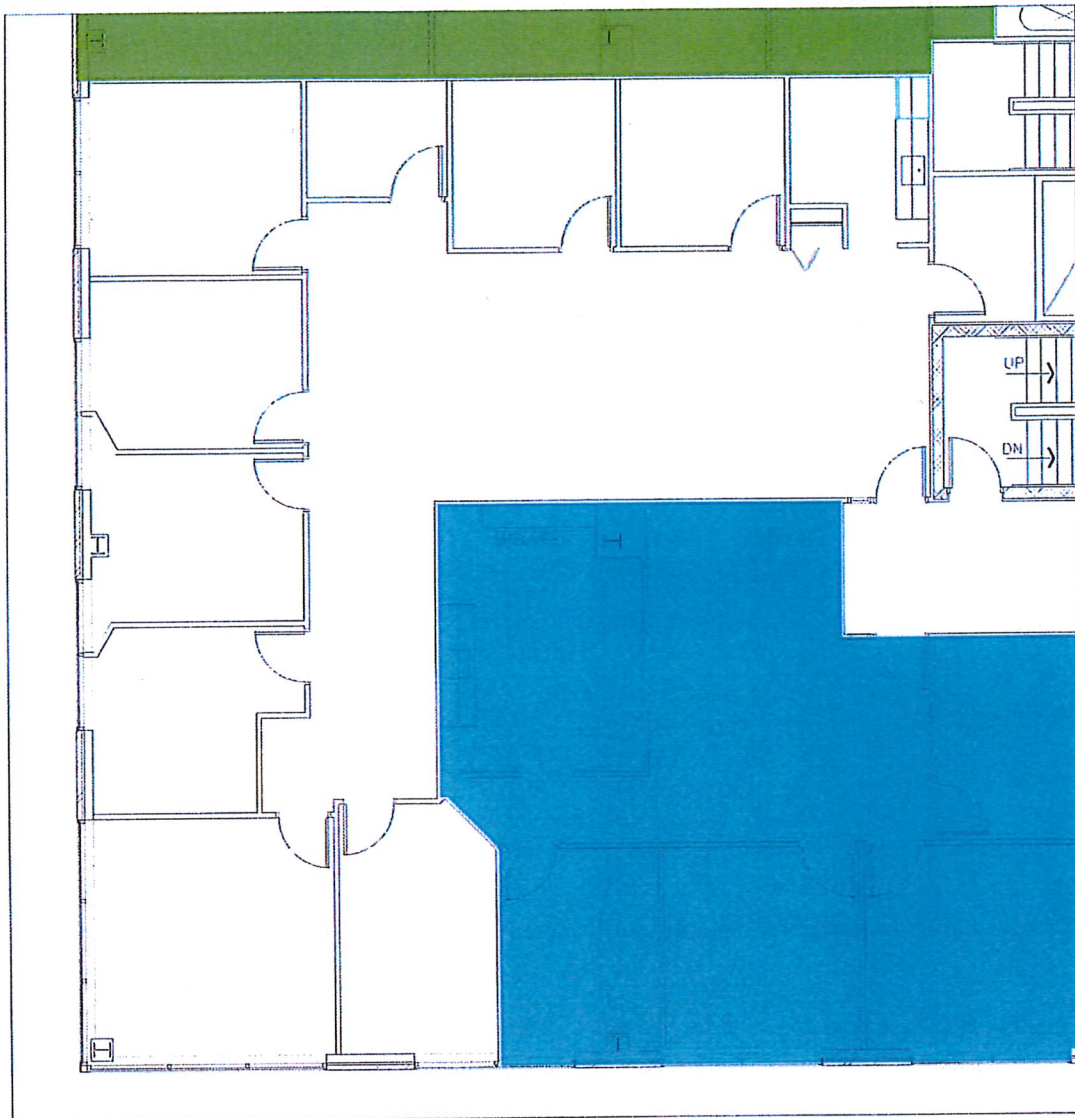
C/M INC.
BUILDER / DEVELOPER
PROPERTY MANAGEMENT
1524 CORPORATE WOODS PKWY
SUITE 100
UNIONTOWN, OHIO 44885
VOICE: 330-985-2253
FAX: 330-985-5324

PROJECT #:
XX-XXX
DATE:
9/27/21
SCALE:
1/8" = 1'



SECOND FLOOR AREA PLAN

A02



AVAILABLE SUITE

SK01

PROJECT:
XX

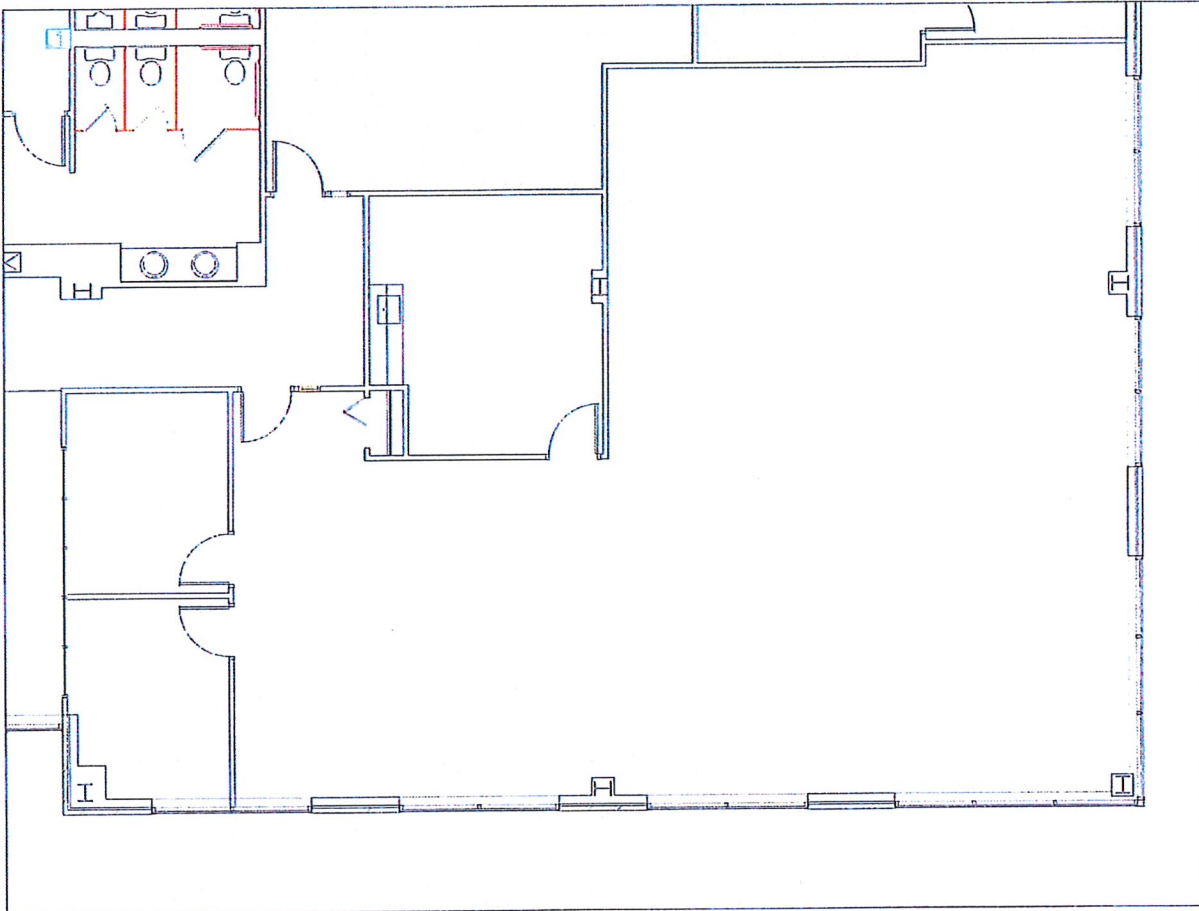
DATE:
4/27/20

SCALE:
3/32" = 1'

CAM INC.
BUILDER / DEVELOPER
1525 CORPORATE WOODS PKY
P.O. BOX 3515
AKRON, OHIO 44309

VOICE: 330-896-3253
FAX: 330-896-3304

RICHFIELD CORPORATE CENTER 1
4199 KINROSS LAKES PARKWAY
SUITE 235
RICHFIELD, OH 44286



AVAILABLE SUITE

SK01

PROJECT:
XX
DATE:
4/27/20

SCALE:
3/32" = 1'

CAM INC.
BUILDER / DEVELOPER
1525 CORPORATE WOODS PKY
P.O. BOX 3515
AKRON, OHIO 44309
VOICE: 330-896-3253
FAX: 330-896-3304

RICHFIELD CORPORATE CENTER 1
4199 KINROSS LAKES PARKWAY
SUITE 250
RICHFIELD, OH 44286