

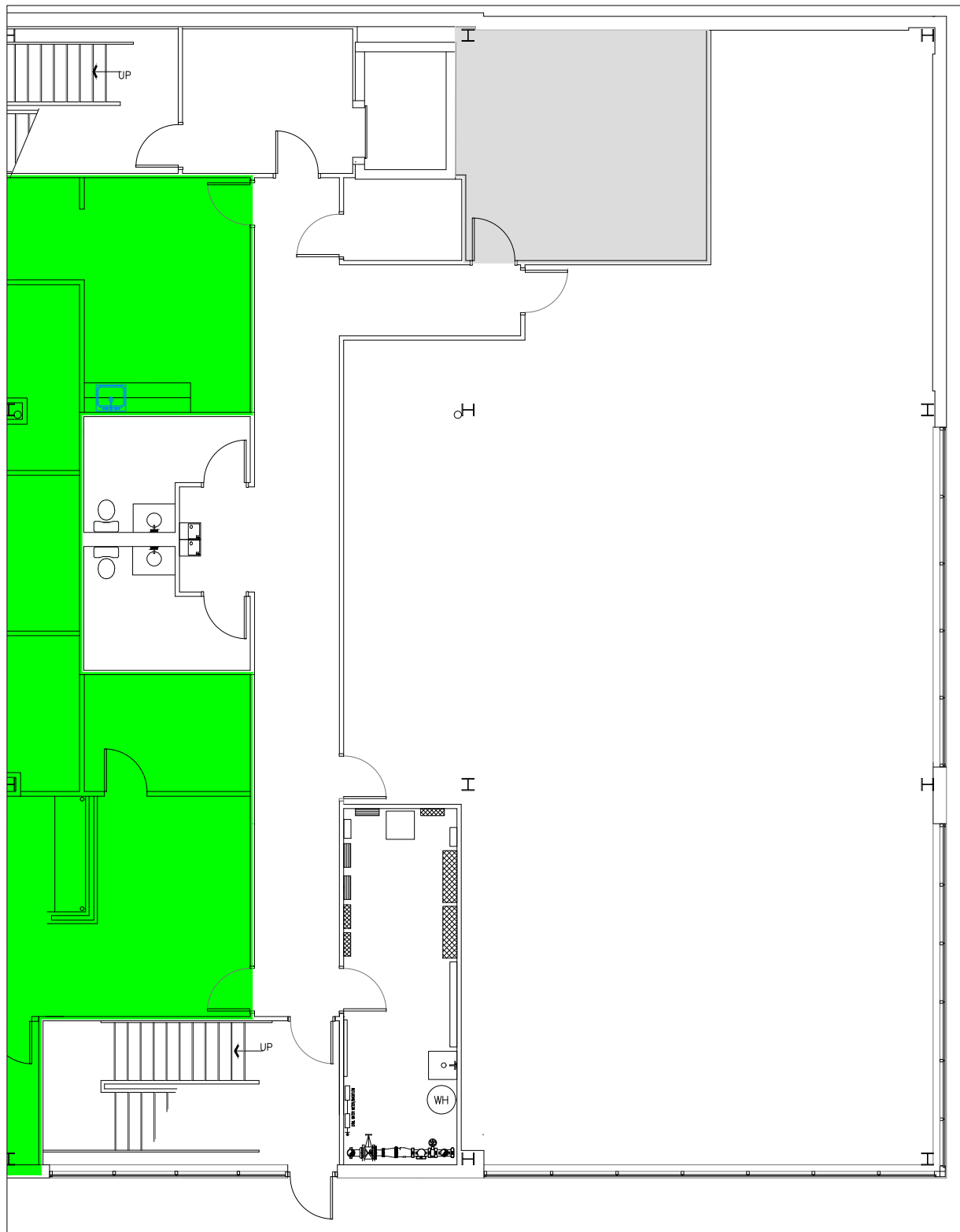


## AKRON/CANTON PROFESSIONAL CENTER II

<b>ADDRESS:</b>	The Akron/Canton Corporate Park 1559 Corporate Woods Parkway Uniontown, Ohio 44685
<b>AVAILABILITY:</b>	AVAILABILITY Suite 25: 2,918 square feet Suite 150: 3,941 square feet
<b>TYPE:</b>	Office
<b>BUILDING SIZE:</b>	30,000 square feet
<b>FLOORS:</b>	Four (4) Floors
<b>BAY SIZE:</b>	30' x 30'
<b>CLEAR HEIGHT:</b>	8'6"
<b>YEAR BUILT:</b>	2005
<b>HVAC SYSTEM:</b>	Variable Air Volume (VAV) Rooftop HVAC Systems
<b>FLOOR LOADING:</b>	80 to 100 lbs. live load
<b>PARKING SPACES:</b>	5 spaces/1,000 Office
<b>UTILITIES:</b>	Water Summit County Sewer Summit County Electric First Energy Gas East Ohio Gas Phone Ameritech
<b>FEATURES:</b>	Excellent Highway Visibility to I-77; Ample Parking; Easy Access to I-77 and Area Services; One (1) Elevator; Picnic Tables
<b>FIBER OPTICS:</b>	In Building
<b>TENANT IMPROVEMENT:</b>	Building Standard Work Letter

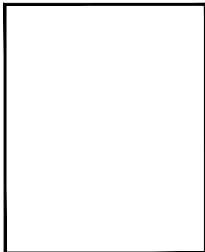
For more information contact Traci or Mike  
**(330) 896-3253**





AVAILABLE SUITE

SK01

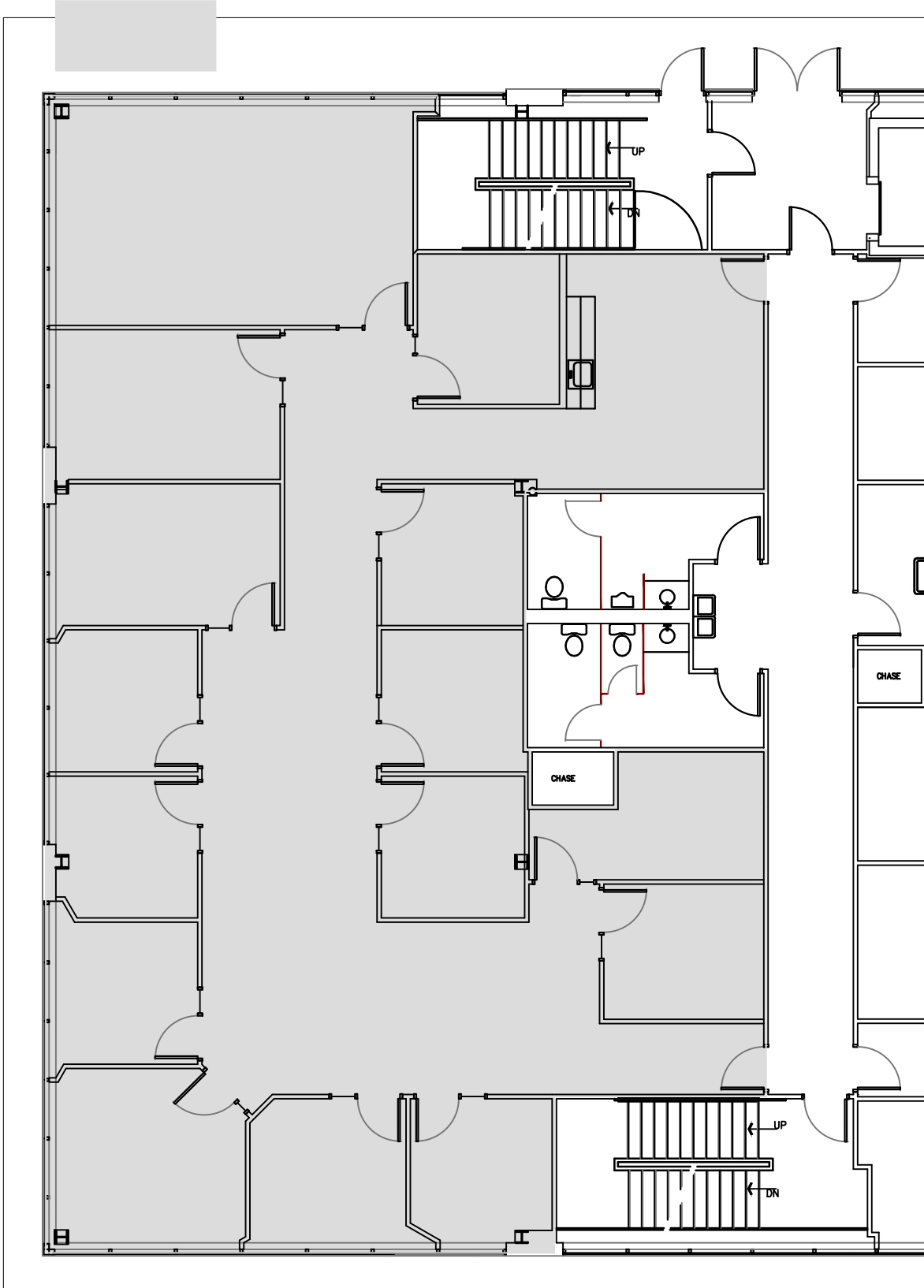


PROJECT:  
19-445  
DATE:  
3/18/20  
SCALE:  
3/32" = 1'

**CAM INC.**  
BUILDER / DEVELOPER  
1525 CORPORATE WOODS PKY  
P.O. BOX 3515  
AKRON, OHIO 44309  
VOICE: 330-896-3253  
FAX: 330-896-3304

AKRON CANTON PROFESSIONAL CENTER 2  
1559 CORPORATE WOODS PKY.  
SUITE 25  
UNIONTOWN, OHIO 44685

AVAILABLE SPACE



AVAILABLE SUITE

Project Number XX-XXX  
Date 4/12/23

**SK-01**

Scale 3/32" = 1'-0"

REVISIONS




1525 CORPORATE WOODS PKY.  
SUITE 100  
UNIONTOWN, OHIO 44685  
330-896-3253  
WWW.CAMINCORP.COM

**AKRON CANTON  
PROFESSIONAL CENTER 2**

1559 CORPORATE WOODS PARKWAY  
SUITE 150  
UNIONTOWN, OH 446854