

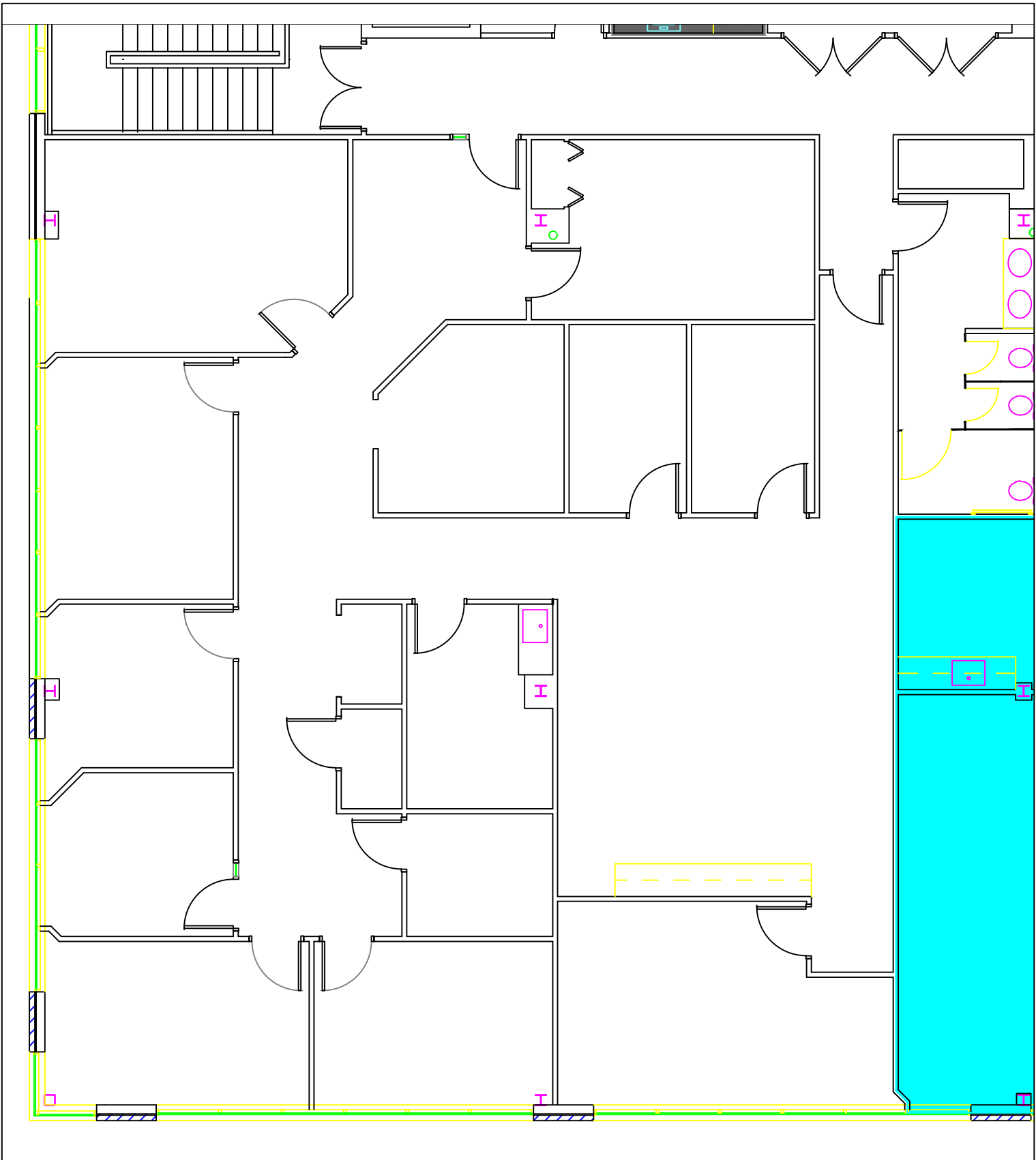


AKRON/CANTON PROFESSIONAL CENTER I

ADDRESS:	The Akron/Canton Corporate Park 1575 Corporate Woods Parkway Uniontown, Ohio 44685	
AVAILABILITY:	AVAILABILITY Suite 280: 3,799 square feet	
TYPE:	Office	
BUILDING SIZE:	18,000 square feet	
FLOORS:	Two (2) Floors	
BAY SIZE:	30' x 30'	
CLEAR HEIGHT:	8'6"	
YEAR BUILT:	1991	
HVAC SYSTEM:	Variable Air Volume (VAV) Rooftop HVAC Systems	
FLOOR LOADING:	80 to 100 lbs. live load	
PARKING SPACES:	5 spaces/1,000 Office	
UTILITIES:	Water	Summit County
	Sewer	Summit County
	Electric	First Energy
	Gas	East Ohio Gas
	Phone	Ameritech
FEATURES:	Excellent Highway Visibility on I-77; Two Story Glass Atrium; Ample Parking; Easy Access to I-77 and Area Services; One (1) Elevator; Picnic Tables	
FIBER OPTICS:	In Building	
TENANT IMPROVEMENT:	Building Standard Work Letter	

For more information **contact Traci or Mike**
(330) 896-3253





<div>FLOOR PLAN</div> <div><div>Project NumberXX-XXX</div><div>Date2/24/25</div></div> <div>SK-01</div> <div><div>Scale</div><div>1/8" = 1'-0"</div></div>		<div>REVISIONS</div> <div></div> <div></div> <div></div> <div></div> <div></div> <div></div> <div></div>	<div><div>CAMINC.</div><div>BUILDER / DEVELOPER / REAL ESTATE BROKER</div></div> <div><div>1525 CORPORATE WOODS PKY.</div><div>SUITE 100</div><div>UNIONTOWN, OHIO 44685</div><div>330-896-3253</div><div>WWW.CAMINCORP.COM</div></div>	<div>AKRON CANTON PROFESSIONAL CENTER 1</div> <div>1575 CORPORATE WOODS PARKWAY</div> <div>SUITE 280</div> <div>UNIONTOWN, OH 44685</div>
--	--	--	---	---